

**Inkjet Printer
RX2**

HITACHI
Inspire the Next

Reliable.
Robust.
Flexible.



Coding Solutions by Hitachi

User friendly operation

Intuitive 10.4" color TFT-LCD touch panel

IP 55 class

USB slot

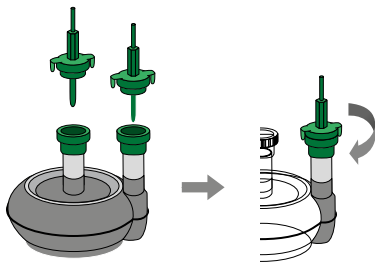
Economical ink system

Easy ink filter replacement

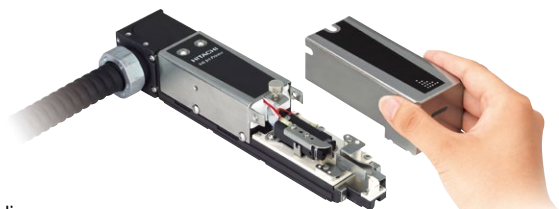
4m flexible printhead umbilical



"Quick disconnect" design



High reliability



Inline or 90 degrees installation



Reliable. Precise. Easy.

For 40 years, Hitachi has developed and produced high performance ink jet printers based on the well-proven Continuous Ink Jet (CIJ) principle for industrial marking.

Higher speeds, increasingly varied substrates and the requirement for environmentally sound solutions have driven the development of our market-leading CIJ printers. The experience and knowledge gained through the installation of more than 100,000 printers worldwide has led to the introduction of our new RX2 series.

Applications

The technologically advanced RX2 printer is ideal for a wide range of applications. It is capable of applying best before dates, logos, barcodes, lot numbers and data matrix codes. Hitachi's RX2 really is the perfect solution for both complex and standard applications.

High reliability

All functionally critical parts are manufactured in-house. The use of Hitachi's own components reinforces the high quality levels, reliability and excellent value for money offered by the RX2. The RX2's printhead is produced from cast aluminium body specially designed for use in extremely harsh environments and to facilitate easy cleaning, low maintenance and long-lasting operation.

Flexible integration

The RX2 is easy to integrate in to existing production lines and networks. The print head can be easily installed either inline or at 90 degrees to meet any requirement. The stainless steel cabinet offers IP55 dust & drip proof protection and usual interfaces are standard features of Hitachi CIJ printers.

Intuitive operation

The RX series offers intuitive and comfortable operation on a 10.4" color TFT-LCD touch panel display. All printer functions are displayed as icons for easy navigation.

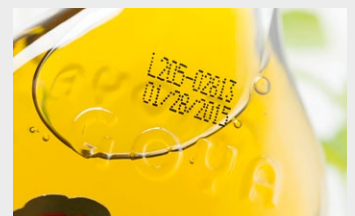
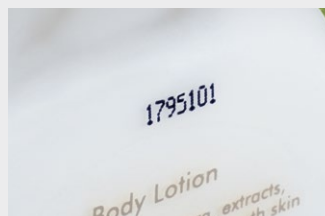
Cost-effective

The economical ink system and the very low maintenance costs minimize the overall total cost of ownership. The "quick disconnect" design of the main ink filter allows easy replacement by the customer, without any tools. Hitachi CIJ printers are also well known for long service intervals.



Hitachi Service

Even the highest quality printers need to be professionally installed, serviced and maintained. With our worldwide network of more than 110 partners, our customers are never far away from highly efficient and competent support.



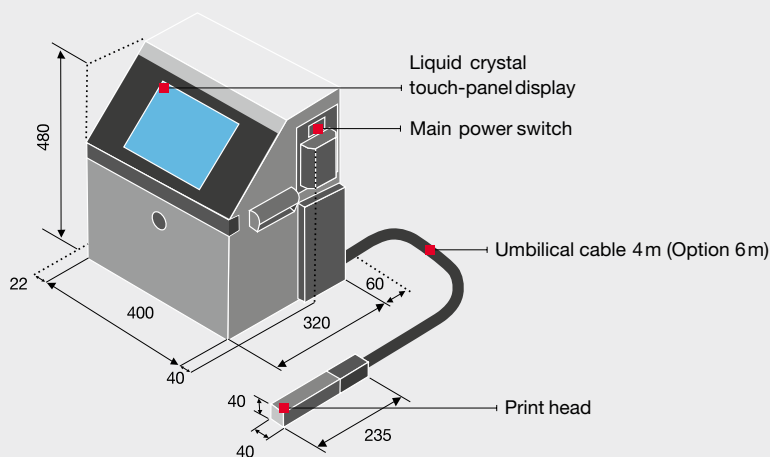
Specifications

Item		RX2-SD160W	
Nozzle size		65 µm	
Max. print line number		Up to 3 lines (option: up to 5 lines)	
Maximum number of print characters		Up to 120 characters (option: up to 1,000 characters)	
Number of lines		Standard	Option
Font	4 × 5	–	up to 5
	5 × 5	1–3	up to 5
	5 × 7(8), 9 × 7(8)	1–3	up to 4
	7 × 10	1–3	–
	11 × 11	1–2 (Chinese only)	–
	10 × 12	2	–
	12 × 16	1	up to 2
	18 × 24	1	–
24 × 32	–	1	
Character height		2–10 mm / 0.08–0.39 inches	
Maximum print rate (characters per second) (font 5 × 5, space 1, 1 line)		Up to 1,148 (option: up to 2,296)	
Barcode printing		Code39, ITF, NW-7, EAN-13, EAN-8, UPC-A, UPC-E, code128 / EAN-128, EAN-13 Add-On 5, GS-1 DataBar	
2D code printing		Option: data matrix (alphabet: 49 characters/numerals: 98 characters), QR code, Micro QR code	
Message storage capacity		48 messages (option: up to 2,000 messages (depends on data content))	
Data interface		RS-232C at baud rates selectable up to 115,200 bps (option: Ethernet)	
Environmental protection		IP55	
Display & input device		WYSIWYG design; display: TFT LCD (10.4" color), backlight provided; input device: touch panel, input sound provided	
Screen language 2 language selectable		English, Thai, Vietnamese, German, French, Dutch, Italian, Spanish, Portuguese, Swedish, Danish, Greek, Russian, Czech, Polish, Arabic, Serbian, Turkish, Hungarian, Bulgarian, Catalan, Romanian, Finnish, Norwegian, Slovenian available. Option: Chinese, Korean, Japanese	
Standard characters		Alphanumeric (A–Z, a–z, 0–9), symbols (27), space: total 90	
Logo		Each dot matrix 200 patterns	
Print functions		Calendar, Count, Font mixture, Passwords security, etc.	
Input signal		Print target detection, Printing stop, Rotary encoder pulse, Reciprocal printing, Remote control (Run, Stop, High-voltage ON/OFF, Reset), (NPN/ PNP Selectable)	
Output signal		Print in progress or Print complete, Online (NPN/ PNP Selectable), Print ready, Fault, Warning (NPN Only)	
External memory		USB for user data storage	
Head cable length / angle		4 m / 13.1 ft (inline / 90 degrees) (RX-SD160W-6M = 6 m umbilical cable)	
Operating temperature range		0–45 °C / 32–113 °F (JP-K69 Ink)	
Humidity range		30–90 % R.H. (no condensation)	
Power supply (automatic voltage selection)		AC100–120 / 220–240V ± 10 % 50 / 60 Hz 150 VA (AC Inlet)	
Approval		CE, UL, cUL, C-Tick, FCC, ICES	
Size cabinet only (W × D × H)		400 × 320 × 480 mm / 15.7 × 12.6 × 18.9 inches	
Approximate weight		25 kg / 55 lbs	

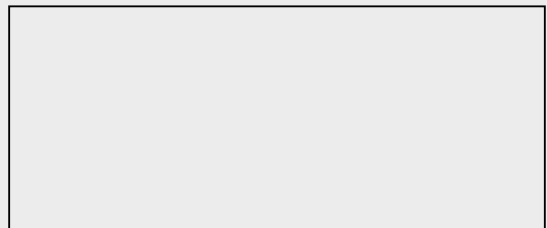
Options: Barcode Reader Connection, Special Communication Function, External Signal Function

1. Hitachi Industrial Equipment Systems Co., Ltd. (Hitachi) shall not be liable for any manufacturing loss, or any product damage due to trouble or malfunction of the ink jet printer.
2. Hitachi continually improves products. The right, therefore, is reserved to alter the design and/or specifications without giving prior notice.

Dimensions of console and print head (Unit: mm)



Hitachi Europe GmbH, Niederkasseler Lohweg 191, D-40547 Düsseldorf
 Tel.: +49 (0) 211-5283-0
 www.hitachi-industrial.eu, info@hitachi-ds.com
 © Hitachi Industrial Equipment Systems Co., Ltd., Japan



Registration number: JACO-EC99J2009
 Registration date: July 22, 1996

The Marking and Hoist Systems of Hitachi Industrial Equipment Systems Co., Ltd. obtained ISO 14001 certification, an international standard for environmental management systems.



Registration number: JQA-QMA12087
 Registration date: April 1, 2005

The Marking and Hoist Systems of Hitachi Industrial Equipment Systems Co., Ltd. obtained international standard ISO 9001 certification for the quality assurance of the hoist motor block contained in this brochure.