



# SWS-6000e

Weigh-Seal-Labeler



*Searching for a New Balance*



empowering  
eco-friendly  
ergonomic

The SWS-6000e is a tabletop weigh-seal-labeler built for the future. Its time shifting capability empowers operators by optimising their workload, freeing them valuable time for face-to-face communication with customers.

Retailers can also cut down on single-use plastic and reinforce their sustainability practices with its eco-friendly solutions and consumables. The SWS-6000e also features an ergonomic design, allowing it to fit nicely behind the sales counter to ensure high productivity within a compact workspace.

## Benefits

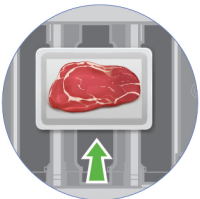
- Tabletop design is ideal for stores with work space constraints
- Top seal ensures consistent packaging quality with minimal film consumption
- Time shifting capability increases customer engagement by balancing operator's workload
- Compostable plastic/ paper trays promote sustainability
- Same UI, PLU file structure and software features as SM-6000 series
- Full packing versatility by toggling between 3 operation modes

## 3 Simple Steps



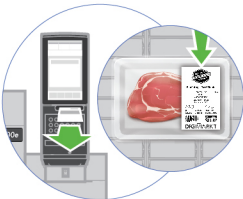
### 01 SELECT

Select PLU Item



### 02 WEIGH & SEAL

Place tray on infeed belt for weighing and top sealing



### 03 PRINT & LABEL

Print and attach label once sealed tray exits gravity roller

## External Dimensions (mm)



## Specifications

Interval Type	Multi Interval		Single Interval
Capacity	Max 3 / 6kg	Max 6 / 15kg	Max 30lb
Scale Interval	1 / 3,000	e = 1/2g	e = 0.01lb
Weighing Range	20g-6kg	40g-15kg	0.09lb-30lb
Wrapping Capacity	50g-1kg	50g-1kg	0.11lb-2.2lb

Model	SWS-6000e*		
Dimension WxDxH (mm)	600 x 839 x 874		
Console	SM-6000		
Operator Display	8" TFT WVGA with Capacity Touch (480 x 800)		
Keyboard	18 x Keypad		
Packing	Tray Size	Inside: 220 x 120 or 170 x 30 or 60	
	WxDxH (mm)	Outside: 240 x 140 or 190 x 30 or 60	
	Packing Method	Top Seal	
	Packing Speed	Up to 16 packs per minute	
	No. of film roll	1 roll	
	Film Size	Width 250mm x Length 250m	
Label / Receipt	Mould Quantity	2	
	Types	Linerless With Auto-Cutter	
	Roll Diameter	Max 95mm	
	Roll Width	Max 62mm	
	Print Width	Max 61mm	
	Printing Speed	Max 150mm / second**	
Print Resolution	300 dpi		
Power Source	AC 100-120V, AC 220-240V		
Standard Interface	Ethernet 10 / 100 Base T, 4 x USB 2.0, 1 x RJ11		
Net Weight (kg)	80kg		

Option	Table Top, e.Label with Hi-Touch, InfoTag, Speed ID, Base Station, Wireless LAN IEEE 802.11 a / b / g / n / ac,
Compliance	OIML, CE, NMI, Measurement Canada, NTEP, CSA, FCC(Class A)

\* Design and specifications are subject to change without prior notice.

\*\* To achieve maximum print speed, high sensitivity thermal paper is necessary.

## DIGI SINGAPORE PTE. LTD.

4 Leng Kee Road #05-02/03/04/05/11/12  
SIS Building SINGAPORE 159088  
TEL : +65 6472 2996  
SALES: +65 6378 5387  
FAX : +65 6863 4614  
URL : www.digisystem.com/sg/  
E-MAIL : customer\_support@sg.digi-group.com

## TERAOKA SEIKO Co., Ltd.

13-12 Kugahara 5-chome, Ohta-ku,  
Tokyo 146-8580, JAPAN  
TEL : +81-3-3752-2131  
FAX : +81-3-3752-5562  
URL : www.digisystem.com