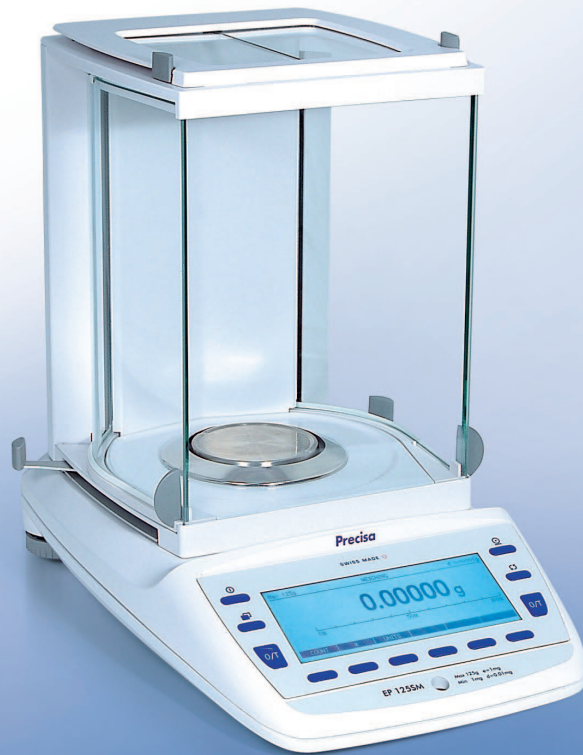


SWISS MADE 

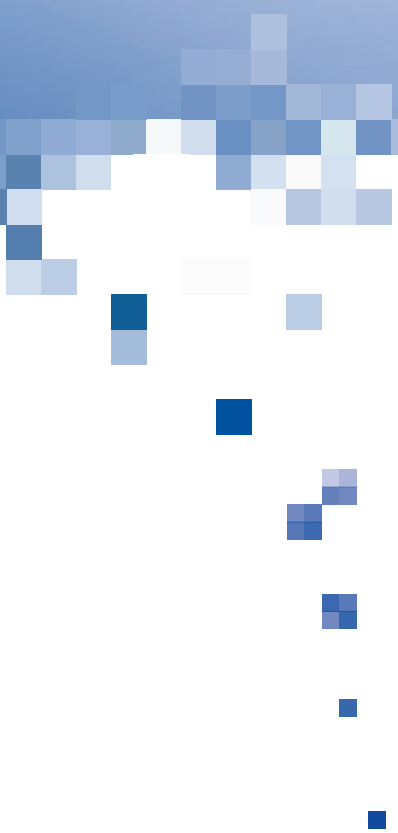
EXECUTIVE PRO **Precisa 360 EP**



Semi-micro

Analytical

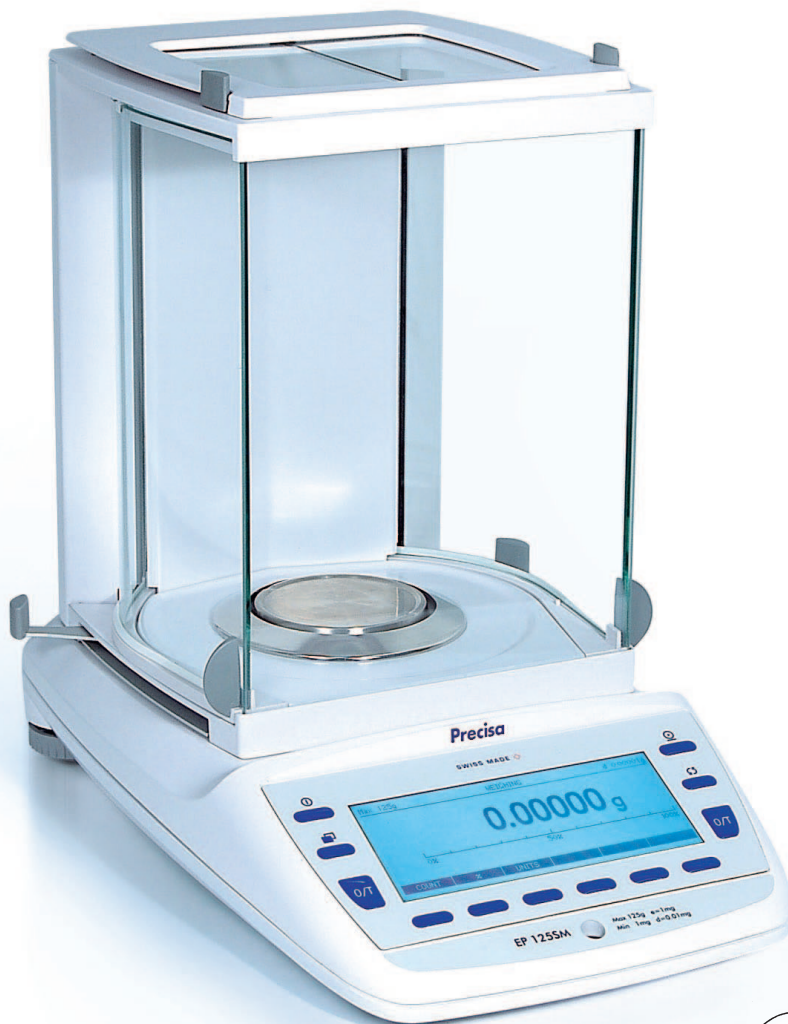
Precision



Precisa

■ The Balance of Quality ■

EXECUTIVE PRO Precisa 360 EP



With the 360 EP series, Precisa is setting new standards in the demanding area of high-end laboratory balances: innovative, high-tech instrumentation which includes the latest technical developments, unique performance features, best user-interface and the most modern design to establish the 360 EP series as the very bench-mark for modern laboratory technology. Those users who will not accept any compromise in their working environment may enjoy the reassuring certainty that for many years they can rely on an extremely accurate laboratory instrument which features the latest technology and renowned Swiss Quality. Day after day.



Paolo Fancelli, Designer

Paolo Fancelli



Compactly styled design



Designed along smooth, flowing lines



Easy-to-read display

Impressive design

The modern, slim design by designer Paolo Fancelli gives our compact, integrated technology an impressive form and positions the new series visually in a class of its own.

Expanded weighing range

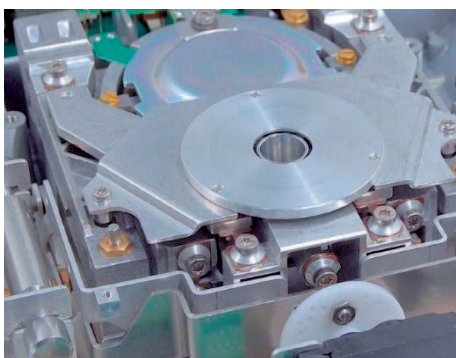
Precisa balances distinguish themselves through their high weighing ranges, as yet unsurpassed in the market. Milligram resolution balances with weighing ranges of greater than one kilogram, or balances with a weighing range of eight kilograms and a readability of one hundredth of a gram.

Life-long reliability

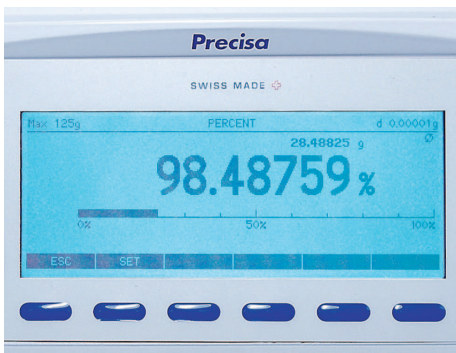
The premium workmanship of our robust die-cast aluminum housing underlines the quality and durability of Precisa products, especially apparent with the 360 series. The balances offer a high degree of protection against mechanical and electrical interference and operate to highest levels of precision from the initial weigh-in procedure through to the final result.

Intuitive user-interface

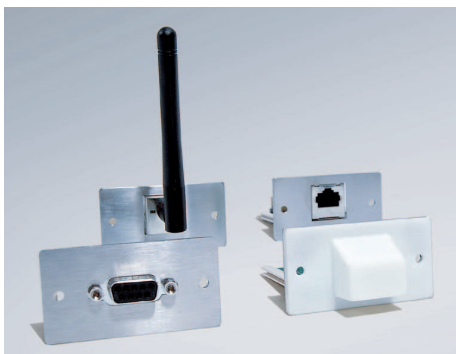
The structured access to the menu and the clearly presented, easy to read display offers simplicity of operation which until now has simply not been available. A few examples of the versatile control offered by the 360 EP series include the start-up display which can be personalised, freely selectable display options and softkeys for direct menu navigation. Furthermore, additional information can be zoomed onto the main display and the useful Language Tool makes it easy for the user to load his or her own language and characters onto the balance display.



Pure Swiss precision at the heart of the balance



Menu-driven, screen-guided applications



Advanced, versatile connectivity

Highly precise technology

The 360 series owes its extremely high reliability and durability to the well-known competence of Precisa's engineering and development and, as a result, exceeds all established industry standards. The weighing cell is of the highest mechanical quality, and operates extremely precisely; it can also be repaired easily and economically. Moreover, our fully automatic, programmable time and temperature controlled calibration system ensures absolute accuracy.

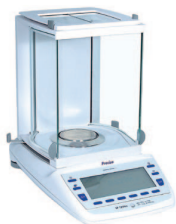
Highest degree of functionality

A wide variety of specific applications is easily selectable and guarantees the highest degree of functionality. The freely programmable storage area offers the option to download additional, user-specific applications via the internet. As the result, the 360 EP series provides an extremely broad spectrum of applications.

Versatile connectivity

Precisa's new, advanced insert technologies, featuring the slide-in module, provide a range of connection options which until now have not been available. The interchangeable inserts assure connection to future communication technologies.

Precisa EP Series: Technical Specifications

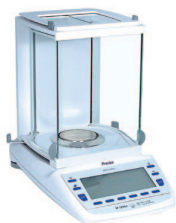


Semi-micro Balances 0.01 mg

| Model | Capacity | Readability | Repeatability | Linearity | Pan Size (mm/inch) | Response time |
|-------------|---------------|----------------|---------------|-------------|--------------------|---------------|
| EP 125SM | 125 g | 0.01 mg | 0.03 mg | 0.06 mg | Ø 80/3.1 | 10 s |
| EP 225SM-DR | 102 g / 225 g | 0.01 mg/0.1 mg | 0.03/0.1 mg | 0.06/0.2 mg | Ø 80/3.1 | 10 / 3 s |

Dimensions (LxWxH) 340x210x345 mm
 Draft shield inside dimensions (LxWxH) 170x170x230 mm

Net weight 6.6 kg
 Sensitivity drift (10...30°C) 1.5 ppm / °C



Analytical Balances 0.1 mg

| Model | Capacity | Readability | Repeatability | Linearity | Pan Size (mm/inch) | Response time |
|------------|---------------|---------------|---------------|-----------|--------------------|---------------|
| EP 120A | 120 g | 0.1 mg | 0.1 mg | 0.2 mg | Ø 80/3.1 | 3 s |
| EP 220A | 220 g | 0.1 mg | 0.1 mg | 0.2 mg | Ø 80/3.1 | 3 s |
| EP 320A | 320 g | 0.1 mg | 0.15 mg | 0.3 mg | Ø 80/3.1 | 3 s |
| EP 420A | 420 g | 0.1 mg | 0.15 mg | 0.4 mg | Ø 80/3.1 | 3 s |
| EP 420A-FR | 120 g - 420 g | 0.1 mg - 1 mg | 0.15/1 mg | 0.3/1 mg | Ø 80/3.1 | 3 s |
| EP 620A-DR | 220 g / 620 g | 0.1 mg/1 mg | 0.15/1 mg | 0.3/1 mg | Ø 80/3.1 | 3 s |

Dimensions (LxWxH) 340x210x345 mm
 Draft shield inside dimensions (LxWxH) 170x170x230 mm

Net weight 6.6 kg
 Sensitivity drift (10...30°C) 1.5 ppm / °C



Precision Balances 1 mg

| Model | Capacity | Readability | Repeatability | Linearity | Pan Size (mm) | Response time |
|-------------|-----------------|--------------|---------------|--------------|---------------|---------------|
| EP 320M | 320 g | 1 mg | 1 mg | 1.5 mg | 135 x 135 | 3 s |
| EP 620M | 620 g | 1 mg | 1 mg | 1.5 mg | 135 x 135 | 3 s |
| EP 920M | 920 g | 1 mg | 1 mg | 1.5 mg | 135 x 135 | 3 s |
| EP 1220M | 1220 g | 1 mg | 1 mg | 2 mg | 135 x 135 | 3 s |
| EP 620M-FR | 120 g - 620 g | 1 mg - 10 mg | 1 mg/0.01g | 1.5 mg/0.01g | 135 x 135 | 3 / 2 s |
| EP 1220M-FR | 240 g - 1220 g | 1 mg - 10 mg | 1 mg/0.01g | 1.5 mg/0.01g | 135 x 135 | 4 / 3 s |
| EP 3220M-DR | 1020 g / 3220 g | 1 mg / 10 mg | 1 mg/0.01g | 2 mg/0.01g | 135 x 135 | 4 / 3 s |

Dimensions (LxWxH) 340x210x150 mm
 Draft shield inside dimensions (LxWxH) 170x170x35 mm

Net weight 5.5 to 5.7 kg
 Sensitivity drift (10...30°C) 2.0 ppm / °C



Precision Balances 0.01 g

| Model | Capacity | Readability | Repeatability | Linearity | Pan Size (mm) | Response time |
|-------------|-----------------|----------------|---------------|-----------|---------------|---------------|
| EP 1200C | 1200 g | 0.01 g | 0.01 g | 10mg | 200 x 200 | 2 s |
| EP 2200C | 2200 g | 0.01 g | 0.01 g | 15mg | 200 x 200 | 2 s |
| EP 4200C | 4200 g | 0.01 g | 0.01 g | 15mg | 200 x 200 | 3 s |
| EP 6200C | 6200 g | 0.01 g | 0.01 g | 15mg | 200 x 200 | 3 s |
| EP 8200C | 8200 g | 0.01 g | 0.01 g | 15mg | 200 x 200 | 3 s |
| EP 6200C-FR | 2200 g - 6200 g | 0.01 g - 0.1 g | 0.01 g/0.1 g | 15mg/0.1g | 200 x 200 | 3 s |
| EP 8200C-DR | 3200 g / 8200 g | 0.01 g / 0.1 g | 0.01 g/0.1 g | 15mg/0.1g | 200 x 200 | 3 s |

Dimensions (LxWxH) 340x210x91 mm
 No draft shield

Net weight 5.1 to 5.6 kg
 Sensitivity drift (10...30°C) 2.0 ppm / °C



Precision Balances 0.1 - 1 g

| Model | Capacity | Readability | Repeatability | Linearity | Pan Size (mm) | Response time |
|-----------|----------|-------------|---------------|-----------|---------------|---------------|
| EP 6200D | 6200 g | 0.1 g | 0.05 g | 0.1g | 200 x 200 | 2 s |
| EP 8200D | 8200 g | 0.1 g | 0.1 g | 0.15g | 200 x 200 | 2 s |
| EP 12200D | 12200 g | 0.1 g | 0.5 g | 0.15g | 200 x 200 | 2 s |
| EP 12200G | 12200 g | 1 g | 0.5 g | 1 g | 200 x 200 | 2 s |

Dimensions (LxWxH) 340x210x91 mm
 No draft shield

Net weight 5.6 kg
 Sensitivity drift (10...30°C) 2.0 ppm / °C

Common Specifications

| Floating display | Temperature range | Line voltage, Tolerance | Stability settings | Power consumption | Frequency |
|------------------|-------------------|---------------------------|--------------------|-------------------|------------|
| adjustable | 0 .. 40 °C | 115V / 230V, +15% / - 20% | adjustable | 12 VA | 50 - 60 Hz |



| Options | 360 EP |
|---|-----------|
| Protection IP65: protection against ingress of dust and low-pressure water jets, fitted at factory, not available for all types | on demand |

| Series 360, slide-in modules | 360 EP |
|---|----------|
| Precisa BUS converter, enables connection to almost all Precisa BUS accessories | 350-8664 |
| USB Host | 350-8665 |
| Ethernet wired | 350-8666 |
| Ethernet wireless | 350-8667 |
| Bluetooth | 350-8668 |
| RS 485 | 350-8669 |
| CAN | 350-8670 |

| Additional Application & Features |
|---|
| SmartBox® Applications, Precisa BUS accessories and further special accessories and options on demand |

| Accessories | 360 EP |
|---|----------|
| Draft shield 320 XB, height 260mm, requires adapter for 1mg, 0.01g, 0.1g and 1g balances* | 350-8519 |
| Draft shield 320 XB, height 180mm, requires adapter for 1mg, 0.01g, 0.1g and 1g balances* | 350-8518 |
| *adapter for 1mg, 0.01g, 0.1g and 1g balances | 350-7402 |
| Draft shield mg, glass with cover | 320-8504 |
| Hook for weighing below the balance | 350-8527 |
| Density kit for 0.01mg and 0.1mg balances Container size Ø= 75mm, h= 100mm | 350-8515 |
| Density kit for solids only (w/o Glass body and Hook) for 0.01mg and 0.1mg balances Container size Ø= 75mm, h= 100mm | 350-8556 |
| Glass body 10ccm for density determination of liquids | 350-7054 |
| Downholder for samples with density < 1 g/cm3 | 350-7194 |
| Evaporation trap for pipette calibration complete for 0.01mg and 0.1mg balances | 350-8581 |
| Adapter to assemble Eppendorf Humidity Trap for 0.01mg and 0.1mg balances | 350-8596 |
| Animal weighing bowl complete for 0.01g balances | 350-8550 |
| Animal weighing bowl complete for 0.1g and 1g balances | 350-8551 |
| Diamond weighing pan | 350-8322 |
| Dust cover 360 for the whole balance, set of 20 pieces | 350-8663 |
| Anti-theft device | 350-8555 |
| Printer CBM910 230V - with cable and paper roll | 350-8379 |
| Printer CBM910 115V - with cable and paper roll | 350-8380 |
| Paper roll for Printer CMB910 | 350-8366 |
| Ribbon for Printer CBM910 | 350-8367 |
| Data cable DB9 Male/DB9 Female 1.5m (PC) | 350-8672 |
| Data cable DB9 Male/DB25 Male 1.5m (Printer) | 350-8673 |
| Cable for balance 360 used as reference balance | 350-8661 |
| External USV accu power pack, 24h continuous operation | 350-8662 |
| Power supply / Adapter with Euro plug for balances with IP65 protection (80V - 240V) | 350-8372 |

Features and Applications

| | | | |
|---|---|---|---|
| Swiss made. | Support IQ/OQ/PQ | Counting | Recorder |
| LCD backlit graphic display (no backlit for 0,01 mg balances) | Anti theft protection - password and mechanical | Animal weighing | Minimum Sample Weight |
| Fully automatic internal calibration system SCS | Direct tare entry (manual), direct reference weight entry | Density determination | Automatic Repeatability Test |
| Easy alpha-numeric input | Clock (Printout GLP/GMP, Auto-Call etc.) | Check weighing plus/minus | Multi-level-backweighing |
| Interface RS232 for PC printer | Below balance weighing | Net total application Add-up summation Dosage program | Buoyancy Error Suppression Technology |
| USB Device | Units g, mg, ozt, lb, tael, etc. | Free conversion Area conversion (paper program) | Pipette calibration and evaporation trap |
| Communication options (USB host, bluetooth, wireless etc.) | % weighing | Statistics | Dynamic Difference Weighing |