



## IQ<sup>+</sup> Pharmaceutical Metal Detection

[www.loma.com](http://www.loma.com)

Versatile, proven metal detection systems for the pharmaceutical industry with full colour graphical touch screen.



- **Compact** Installed easily and quickly after the de-duster or tablet press
- **Safe** The failsafe reject mechanism ensures precise rejection of contaminated product
- **Sensitive** Advanced signal processing provides unsurpassed levels of detection
- **Hygienic** Product contact parts can be quickly dismantled and cleaned
- **Reliable** Robust design ensures long, reliable performance on the line

Metal Detection

X-ray Inspection

Checkweighers

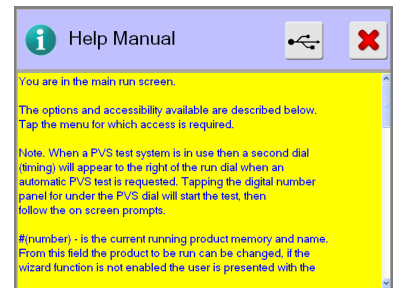
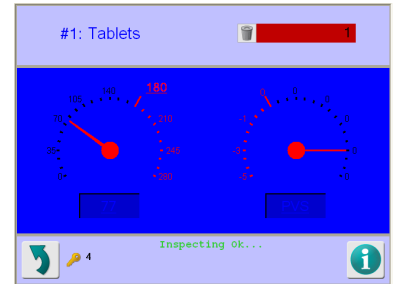
Data Capture

*Designed to Survive*



# IQ<sup>+</sup> Pharmaceutical Metal Detection

Finish:	304 stainless steel with brushed finish	
Aperture Sizes:	100mm x 20mm	100 x 38mm
Supply Voltage:	110/115/200/220/230V 50/60Hz	
Input Height:	530mm to 835mm	
Output Height:	240mm to 680mm	
Height Adjustment:	Gas strut assisted	
Tilt Angle:	45° maximum	
Reject Type:	High speed electrical solenoid driven flap	
Throughput:	Up to 10,000 tablets/min	
Cleaning Regime:	Wipe/blow machine Wash inlet/outlet chutes	
Environmental:	IP54	
Options:	Beacon stanchion PVS Beacon	LomaEnet Serial link



## Technical Specification

IQ OQ Validation Document

PVS to aid HACCP compliance

Various communication options to suit plant integration protocols

Direct transmitter drive to eliminate thermal drift

High field strength to eliminate external interference and deliver the ultimate in noise free detection

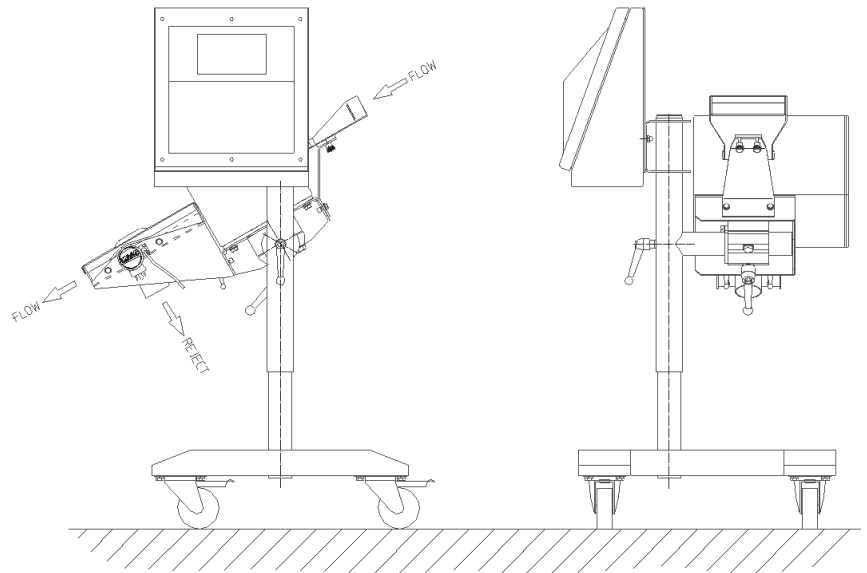
32-bit digital signal processing for enhanced contaminant detection

Standard apertures on rapid delivery

1MHz operating frequency for peak high-grade stainless steel detection

Extensive on board reporting facilities meaning HACCP and retailer compliant, Ethernet and OPC compatible

Data and product backed up and stored via USB



Loma Systems, Summit Ave, Southwood, Farnborough, Hampshire, GU14 0NY

**Tel:** +44 (0)1252 893300

**Fax:** +44 (0)1252 513322

**Email:** sales@loma.co.uk



0211/104

*Designed to Survive*