

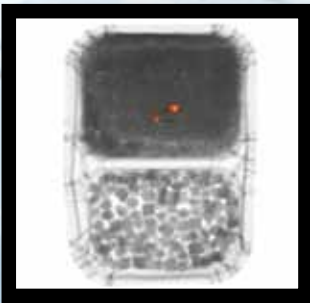
# X-RAY X5<sup>c</sup> Inspection System

For the food, pharmaceutical & packaging industries



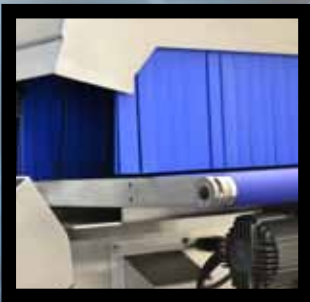
## COMPACT X-RAY SYSTEMS

- Compact design
- Simple to install and operate
- Detection of all metal types, glass, stone, calcified bone and dense plastics in all packaging formats
- Ideal replacement for poor performing “Ferrous only” and “Twin head” metal detectors
- Fully compliant with the latest retail requirements
- High throughput rates possible
- Low cost of ownership



### 8" Intuitive Icon Driven Touch Screen

A Windows Embedded operating system allows direct control of all the machine's features such as product learn, reject settings, images, scheduled maintenance and lots more.



### Loma's tried & tested belt components

Measuring 1m in length, the system is suitable for products up to 100mm in height, 300mm in width and up to 6kg in weight.



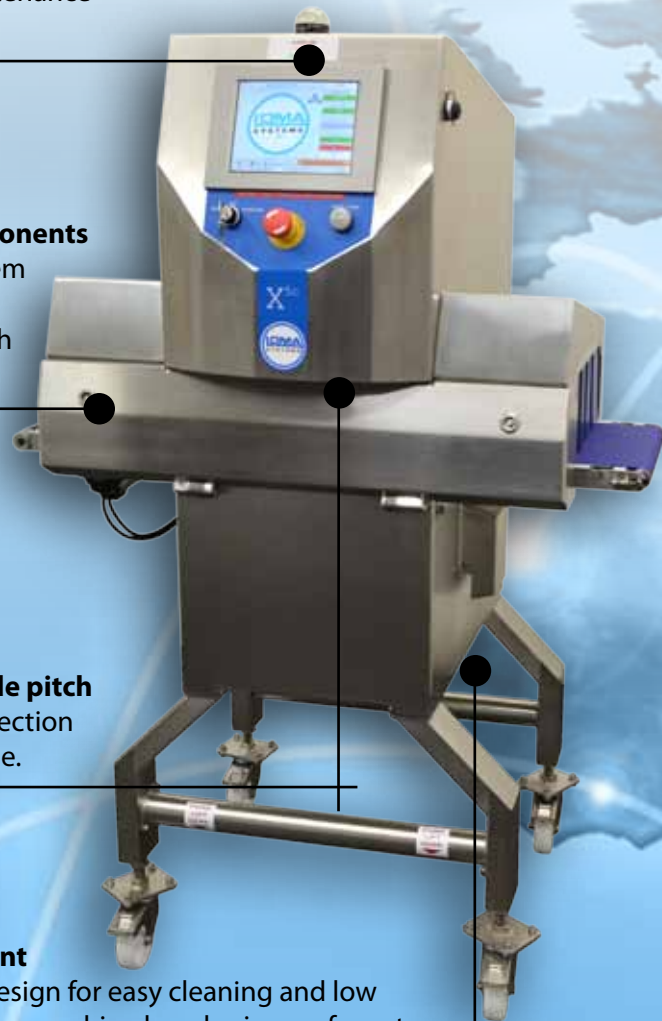
### Detector array with 0.8mm diode pitch

Offers a combination of high inspection performance and low power usage.



### Hygienic design & Small footprint

The X5c offers an ultra-hygienic design for easy cleaning and low maintenance and serviceability. The machine has sloping surfaces to stop food particles and washdown droplets accumulating in crevices and to reduce drying time. The X5c has a 30% smaller footprint than the Loma X5 SpaceSaver X-ray machine.



*Designed to Survive*

## Product Highlights

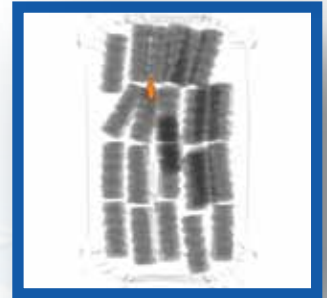
• Leading detection performance using patented "Loma Explorer" algorithms
• Detector array with 0.8mm diode pitch
• Fully retail compliant & password protected access
• Linear speeds up to 60 m/min, with optimum performance
• Heavy duty conveyor components, built for 24/7 operation
• Easy to use intuitive full colour 8" touch-screen
• Total power usage of 80W = 40kV 2mA

## Key Features

Finish	304 stainless steel with brushed finish
Line Height	700mm to 1100mm +/-50mm
System Length	1000mm + (800mm with rejection station)
Inspection window	300mm wide / 100mm high
Failsafes	Complies with retail and food manufacturing standards
Reject types	Signal only (Optional pusher, air blast, diverter, retracting, declining)
Environment	IP55 compliant
Drive & transport system	Robust, tried and tested Loma design
Data retrieval	Via USB or Loma Enet as standard

## Technical Specification

Industrial Grade PC with LAN connection
Windows Embedded Standard (WES) operating system
Digitally controlled WASC (Wide Angle, Self Cooled) high performance X-ray tank. (Tube life estimated at 10,000 operational hours)
Computer vision system utilising image processing and morphological techniques
USB, Network, Loma e-net and OPC Data collection
Full diagnostic and system health monitoring with date and time stamp archiving, including remote support tools
Usage monitoring with planned maintenance prompts
Modular system with high speed digital communications between major components



## In association with



Loma Systems and Lock Inspection operate from several locations in the Americas, Europe and Asia. Across these sites they conduct ongoing research and development, specialised manufacturing, sales and service support. They also have representatives worldwide, who provide sales and service support as one of their distributor partners. All of their customers can be assured that they will be fully served and supported wherever they are.



[www.loma.com](http://www.loma.com)  
[www.lockinspection.com](http://www.lockinspection.com)

### UK

Tel: +44 1252 893 300  
Fax: +44 1252 513 322  
e-mail: [sales@loma.co.uk](mailto:sales@loma.co.uk)

### USA

Tel: +1 800 USA LOMA  
Tel: +1 630 588 0900  
Fax: +1 630 588 1394  
e-mail: [sales@loma.com](mailto:sales@loma.com)

### Canada

Tel: +1 800 387 7987  
Tel: +1 905 842 4581  
Fax: +1 905 842 3460  
e-mail: [lomacanada@loma.com](mailto:lomacanada@loma.com)

### China

Tel: +86 21 6410 2396  
Fax: +86 21 6410 2395  
e-mail: [cn.sales@loma.com](mailto:cn.sales@loma.com)

### Brazil

Tel: + 55 (0) 11 3123-2850  
Tel: + 55 (0) 11 9 8455-1356  
e-mail: [br.sales@loma.com](mailto:br.sales@loma.com)

### France

Tel: +33 (0) 1 69 59 16 20  
Fax: +33 (0) 1 69 59 16 21  
e-mail: [fr.sales@loma.com](mailto:fr.sales@loma.com)

### The Netherlands

Tel: +31 (0) 7650 30212  
Fax: +31 (0) 7650 89800  
e-mail: [bnl.sales@loma.com](mailto:bnl.sales@loma.com)

### Germany

Tel: +49 2064 437240  
Fax: +49 2064 4372449  
e-mail: [de.sales@loma.com](mailto:de.sales@loma.com)

### Czech Republic

Tel: +420 724 879 496  
Fax: +420 377 183 810  
e-mail: [cz.sales@loma.com](mailto:cz.sales@loma.com)

### Poland

Tel: +48 22 575 70 25  
Fax: +48 22 575 70 01  
e-mail: [pl.sales@loma.com](mailto:pl.sales@loma.com)